

INSIDE THIS ISSUE

- **FERGUS FALLS AREA CHAMBER OF COMMERCE - DEFINING WHAT WE DO BEST!**
- **LAKES & PRAIRIES COMMUNITY PARTNERSHIP - FREE HOME REPAIR**
- **NLLN - MAKING ALL LIBRARIES STRONG IN THE REGION**
- **DOUGLAS COUNTY COMMISSIONERS APPROVE CHILD CARE FUNDS**
- **IT'S A JOB SEEKERS BUFFET!**
- **RURAL MINNESOTA CEP - TICKET TO WORK**
- **HORIZON PUBLIC HEALTH - FREE ARSENIC TESTING**
- **LSNM - SARAH MOORE & HEATHER LABAT**
- **SMART ROOMS**
- **PRAIRIE WETLANDS - EDUCATOR WORKSHOP**
- **LCSC WELLNESS - APRIL AWARENESS**

Defining

What we do best!

BY MARY PHILLIPE

FERGUS FALLS AREA CHAMBER OF COMMERCE

Led by President Lisa Workman, the chamber of commerce works as the lead advocate and resource for its members. Since 1886, the Fergus Falls Area Chamber of Commerce has served the community through membership promotion, programming, legislative advocacy, and special events. Workman has been actively serving the community in this capacity for more than 15 years. She shared one of the highlights of being the chamber president is meeting with business owners and their staff one-on-one. Workman enjoys hearing stories of how and why they started their business and what drives them to succeed. Welcoming new businesses to Fergus Falls is a big part of the chamber's role.

When Scooter's Coffee recently opened in Fergus Falls, the chamber helped create awareness about their business and "Grand Opening" with the traditional "Ribbon Cutting" ceremony.

Workman shared that Scooter's Coffee owners Merv and LaDonna Van Engen are energetic and thoughtful people who moved to the area and thought opening a Scooter's Coffee franchise in Fergus Falls could be something to do in their retirement. "The Van Engen's goal is to provide opportunities to people who need employment. They work to provide exceptional training and support to their employees, helping to improve the lives of each person who works at Scooter's Coffee. Stories like this about business owners who care so much for their employees are the best parts of my job," said Workman.

continued on next page

Source: Lisa Workman, President, Fergus Falls Area Chamber of Commerce

Author: Mary Phillipe, LCSC Communications Generalist



I ENJOY HEARING
THE STORIES OF
WHY THEY STARTED
THEIR BUSINESSES.



2022 STRATEGIC PRIORITIES

1. DRIVE LOCAL ECONOMIC GROWTH.
2. FACILITATE BUSINESS-TO-BUSINESS RELATIONSHIPS.
3. INSPIRE COMMUNITY VITALITY.
4. LEVERAGE GOVERNMENT LIAISONS.
5. SUPPORT WORKFORCE STRATEGIES.
6. PURSUE CLARITY AND DISTINCTION.
7. IMPROVE ROI FOR MEMBERS.

www.fergusfalls.com

With the 2018 chamber building remodel complete and plans to pay off the remaining financing balance by the end of 2022, Workman started thinking about what could be on the horizon: what's the next big thing? This led the board to invest in future planning and strategic thinking about the future of the chamber.

They partnered with **NorthPoint Professionals**, defined what they do best, and looked at how they can best support the local community. They wrapped up in March of 2021, and from this in-depth focus, they determined their strategic priorities for 2022 and beyond.

Also created from the visioning process are new membership investment levels for businesses big and small. Now existing and new members can choose their level of participation and support. Workman is excited to meet with their existing 360 plus members and potential members to determine which level fits best with their organization.

continued on next page

SIGNING DAY!

Another component of the visioning process was developing a plan to create an employment pipeline from our local educational institutions to our local businesses and industries. The chamber is now partnering with the Fergus Falls School District to coordinate a “Signing Day” for our local students. This event will elevate careers in demand and recognize our local high school seniors to help fill the talent pipeline. Chamber activities include a Showcase Fergus Falls Online Trade Show and Job Fair scheduled for Monday, April 4 -10, 2022. This virtual trade show is an interactive way for businesses and community members to “get to know you.” Since it is virtual, it will be open 24 hours. Last year’s virtual event was very well attended, and the chamber tracked more than 6,000 web page views during the event. Next up, the Leadership Summit is scheduled for Thursday, June 2. This event will be set up like a town hall meeting, and community leaders will take questions from the community and provide updates on what is happening in Fergus Falls.

The chamber's needs also include identifying a new signature event and, from there, developing more working committees. The “Taste of Fergus Falls” has served as the chamber’s signature event and provided significant operational revenue for several years. This event focused on local restaurants and provided a space for community leaders, businesses, and residents to mingle and learn more about the great dining options in Fergus Falls. “This event ran its course and is something our board determined was time to sunset in 2019,” said Workman. Workman is now focused on creating a new signature event for the chamber. One they will be known for and can replace the revenue of the “Taste.” The annual golf event continues to be a success and provides operational revenue for the chamber.



Fortunately, the chamber received funding through the CARES Act to ensure continued operation when in-person events were put on hold due to the pandemic.

The chamber is in the heart of our city and is a valued community resource. Their professionals and board of directors are constantly looking at innovative ways to connect people and businesses throughout our community and region. Workman knows that collaboration is critical for success, and most recently, the chamber partnered with Otter Tail County and Park Region, to install a “Smart Room.” Smart rooms are FREE-to-use public spaces with public wi-fi and video conference technology. These spaces are great for remote workers, job interviews, online learning, virtual meetings, etc. Room availability is Monday – Friday, 8:30 am – 4:30 pm. Call the chamber staff to schedule a time to use the room.

In 2016, the City of Fergus Falls embarked on developing a community-based vision and master plan for the downtown and the undervalued riverfront. “We wanted to be the champion to help initiate the revitalization of our downtown,” said Workman. The newly remodeled chamber showcases Fergus Falls on the river with a welcoming public patio that will soon overlook the new Fergus Falls Farmer’s Market. The Fergus Falls Area Chamber of Commerce will be a place for businesses, families, and visitors to enjoy for many years to come. ■

"We want to be the champion to help initiate the revitalization of our downtown!"



If you want more information about the Fergus Falls Area Chamber of Commerce, its services, and upcoming events, don't hesitate to contact Chamber President Lisa Workman at 218-736-6951 or visit their website at fergusfalls.com.

Free HOME REPAIR

ASSISTANCE FOR MINNESOTANS



CAPLP-Lakes & Prairies Community Action Partnership is proud to team up with Group Workcamp to help improve homes! CAPLP has numerous applications from older adults, persons with disabilities, single parents, and income eligible residents that need repairs on their homes. To be eligible, households must be within 30 miles of Moorhead, Minnesota, and be Minnesota residents. All repairs will take place June 19-25, 2022. Both labor and materials will be free to qualifying households.

All home repairs will be done by youth volunteers from across the country. Moorhead Public Schools has graciously partnered with us for this impactful project. Basic home repairs provided can include scraping, painting (both interior and exterior spaces), weather stripping/caulking around doors and windows, new stoop and/or step construction, wheelchair ramp construction, minor fascia/soffit repair, new mobile home skirting or skirting repair, and other minor repairs to handrails and porches.

Our last Group Workcamp took place in 2018, with 28 homes being repaired within a 30 mile radius of Breckenridge, MN. Four of the homes were weatherized to ensure safe and healthy places to live. Weatherization also saves on energy costs by making homes more efficient. Five wheelchair ramps were also installed in homes to make them more accessible. We are excited to transform homes and create better living conditions for families in our community!

For questions or more information, contact Robin Christianson at 218.512.1558. ■



Making All Libraries in the Region Stronger


NORTHERN LIGHTS **LIBRARY NETWORK**

“We know what good literature is, and we know we have a duty to preserve it,” said Kathy Enger, Northern Lights Library Network (NLLN) Executive Director, regarding the attributes of a good librarian.

Enger has served as Executive Director for nearly eleven years networking and providing resources to libraries across a large region in Minnesota. NLLN supports 280 academic, public, school, and specialty libraries in North-Central, Northwest, and West-Central Minnesota. As Executive Director over the large service area for NLLN, Enger often logs over 20,000 miles annually in her twenty-three-county region.

With an office located in the beautiful Weld Hall at the MSUM Campus, Enger works to ensure libraries have the resources to serve their community. “We do this best,” said Enger, “We find and discover resources and place them where they need to be.” The main objective of NLLN is to make all libraries in her service region stronger.

With an annual budget of \$218,000, the NLLN employs one full-time Director and one part-time financial assistant.



**“WE KNOW WHAT GOOD
LITERATURE IS,
AND WE KNOW WE
HAVE A DUTY TO PRESERVE IT”**

Tirelessly, Enger works to seek out the kinds of library services people and communities need and determine what supporting structures are required for their local library systems to function successfully. This may include finding and moving a collection to a library or helping to “weed” an existing collection at a library.

NLLN is one of seven multi-county, multi-type library systems in Minnesota mandated by Minnesota Statute 134.351. The six other Minnesota multi-type library systems include:

- Arrowhead Library System
- Central Minnesota Libraries Exchange
- Metronet
- Prairielands Library Exchange
- Southeast Library System
- Traverse des Sioux Library Cooperative

Source: Kathy Enger, NLLN Executive Director
Author: Mary Phillippe, LCSC Communications Generalist

continued on next page

NLLN's goals for their region include:

- Sharing resources among all participating libraries
- Providing long-range planning for cooperative programs
- Developing a delivery system for services and program
- Developing a bibliographic database
- Maintaining a communications system among all cooperating libraries

Training and programming for librarians and occasionally community members are also a part of the services provided by NLLN. Additional programs and training provided or coordinated by NLLN have included:

- The YALSA's (Young Adult Library Service Association) Training provides information on transforming Teen Services in the library.
- Poets Across Minnesota, this program encourages the love of reading, literature, and the spoken word by sponsoring poetry readings and events for regional poets in and through libraries in the region. As a part of NLLN's "Poets Across Minnesota" program, broadsides of poets in the NLLN region were created by Patrick Vincent, former professor of visual arts at MSUM. The broadsides are on display at the MSUM Library and are available for purchase to help raise funds for this program.
- Becoming an Author Writing seminar. As part of the Minnesota Libraries Publishing Project, NLLN provides a certified writer to provide a workshop on writing and training utilizing the Minnesota Libraries Publishing Project.



For centuries the written word has been the hallmark of libraries. However, the use of eBooks has continued to increase. The pandemic only heightened the awareness that this tool needs to be accessible to all people regardless of their economic status. "At times, the demand is outpacing the availability of eBooks," said Enger. NLLN works to provide eBook resources to their service area through their provider, Overdrive, and continues to look for solutions to ensure eBooks are available. "Children and individuals in small rural communities appreciate the ability to download eBooks, making reading and learning more accessible for everyone," said Enger.

continued on next page



Birch Bark Biting,"
by Dr. Denise Lajimodiere

BIRCH BARK BITING BROADSIDE

This signed and numbered broadside was created by Patrick Vincent, former professor of visual arts at MSUM.

A primary goal of the Northern Lights Library Network (NLLN) is to bring resources from the state and national levels to the local level.

The broadsides are for sale at \$25 each to raise funds for NLLN's scholarship fund.

Like many other non-profits, funds for operating are limited, and the fear of losing funding is ever-present. Enger regularly reaches out to her regional legislators, letting them know the positive outcomes impacting children and individuals due to the funding NLLN received.

Before the pandemic, Enger regularly coordinated an annual event called the “Library Luncheons with Legislators.” This event allowed the region’s librarians to visit with local legislators, inform and educate, form positive relationships and work to ensure ongoing library support was available in our region.

NLLN

**Weld Hall at the MSUM Campus -
Home of the NLLN Office**



When asked about the highlights of her role as Executive Director, Enger stated, “working on the Minnesota Literacy Initiative and ongoing library administrative and technical support for the Maamagin Achigaazo Community Library has been a highlight.” With guidance from the NLLN, funding from the Institute of Museum and Library Services, the Native American Library Services grant program, and furniture donations from Minnesota State University Moorhead (MSUM), Maamigin Achigaazo, meaning “the gathering place,” was able to open in August 2015. This children’s library continues to be an essential community resource for children, and today books are checked out through the Early Childhood Initiative program.

Another highlight included finding the financial resources for the Campbell-Tintah Public School Library to receive books from the Viking Bookmobile. The library in the school was in desperate need of new collections. Enger worked to find the funding to support the Viking Library Bookmobile addition to their route and provide new collections. Enger added that her goals include working with NLLN members on projects like these, and she is always on the search for new opportunities. “When you say yes, there is always an opportunity before you! The opportunities can be limitless,” said Enger.

If you would like to learn more about the services provided by the Northern Lights Library Network, contact Kathy Enger at 218-477-2934 or visit their website at www.nlln.org ■

DOUGLAS COUNTY

COMMISSIONERS APPROVE CHILD CARE FUNDS

.....



To learn more about Douglas County Social Services programs and the Family Child Care Grant request, visit their website at www.co.douglas.mn.us/social-services

One recent example of how social services works to support families of all socioeconomic status was an investment into Douglas County child care programs. The Board of Commissioners approved investing \$50,000 in funds from the American Rescue Plan Act to assist in licensing new family child care providers or expanding child care services for those currently licensed.

Newly licensed providers may be eligible for a grant of up to \$2,500 for items needed to assist with receiving licensure. Bonds will oversee the application and approval process of this funding opportunity. This investment into local child care facilities in Douglas County will help provide resources for the child care facilities to continue meeting the licensure requirements that have become a significant budgeting item.

While ensuring quality child care is available for working families is essential for a strong community, what keeps Laurie up at night is the families and individuals who are carrying additional stress from not having life's basic needs met.

Laurie believes that family problems are more complex than they used to be, and the pandemic has only heightened these challenges.

Laurie continues to work each day with her staff, providing the programs and services to individuals and families needed to improve their quality of life. Bonds stated, "at the end of each day, I want to know I did everything I could to ensure all the children that crossed my path were provided the best opportunities for a good quality of life." ■

**Laurie Bonds, Douglas County
Director of Social Services**



Douglas County Social Services, based in Alexandria, Minnesota, is responsible for providing services impacting the well-being of its residents. The Douglas County office of Social Services operates over 15 programs providing life's basic needs of housing, food, clothing, healthcare, and more.

Serving as the Director of Social Services, Laurie Bonds has been working to improve the lives of residents in the community for over 30 years. Bonds reflected on the time when she began her career in Social Services. When she started her career in Douglas County, five staff members operated the Social Services programs. Today there are over 70 staff members specializing in programs serving the complex needs of individuals and families. "The most significant benefit of working in Social Services," stated Bonds, "is the opportunity to see the families and individuals you work with experiencing a better quality of life. Unfortunately, there is a misunderstanding by many about our social services programs that we only help those in poverty."

CONCENTRATED EMPLOYMENT PROGRAM

Vicki Leaderbrand takes pride in serving as the first female Executive Director of Rural Minnesota CEP (RMCEP). She has worked to improve people's lives in a 19-county region in West Central and Northern Minnesota for the past 17 years. Her goal has been to strengthen the workforce through job training, providing opportunities for individuals to learn about job openings, skill counseling, career planning, tuition assistance, mentoring, and more.

"I can usually predict where the workforce trends are headed; that is not the case now. The workforce now is very unpredictable. You see this across all age demographics, skill levels, early retirees, and those for whom it is time to retire. These conditions and more have added to workforce shortages," said Leaderbrand. She learned quickly when Covid-19 began impacting the workforce, RMCEP would need to change the way clients, employers, and communities were served. Shifting to drive through job fairs and job fairs in community parades in Brainerd, Bemidji, Little Falls, and Wadena were effective, alternative ways to get the word out to job seekers. At the local office in Detroit Lakes, Kelley Nowell serves as the Site Supervisor. "We are in a job seekers buffet," said Nowell, "The younger workforce wants flexibility from their employer, the ability to work from home, and growth opportunities in the organization." Nowell explained their role is to help clients move from unemployment to employment.

They start where clients are in terms of availability and ability; next, a counselor evaluates each person, asks questions, and finds the resources they need to help them find stable employment. "We do our best to meet individual needs timely, helping clients meet all the requirements and get all the steps done to start the job," said Nowell.



Vickie Leaderbrand,
Executive Director, Rural Minnesota CEP

One great example of how RMCEP has helped an individual find success is a story about a young woman seeking to find fulfilling work that is not behind a desk. Welding as a career choice had never occurred to Kelsey Saba before attending Central Lakes College (CLC). After high school, she took a few college courses in Accounting and accepted a great paying job with a company in their accounts receivable department. She enjoyed this job but wanted more. Despite never having welded before, she enrolled in the Welding course at CLC and immediately found she was a natural.

"The younger workforce wants flexibility from their employer, the ability to work from home, and growth opportunities in the organization."

- Kelley Nowell,
Site Supervisor,
Detroit Lakes



When asked how she became so skilled at the trade, she responded, "If I had to pick one thing, it would be my attention to detail because welding is like an art form, and I am constantly trying to make all my welds perfect, she said. "I also absolutely love being able to do something different every day and not be stuck sitting at a desk."

Saba studied and practiced at CLC to achieve a Level II Advanced Welder status right out of college and was quickly hired by JAVRON Inc, an experimental aircraft fuselage kits manufacturer.

Rural Minnesota CEP played a significant role in Saba's success story by guiding her through all the steps necessary to complete the program, their certification requirements, and helping pay for her tuition to attend the program. Today, Saba gives back by mentoring students in the program she completed at CLC.

"The work RMCEP does is integral to the workforce and economy of Minnesota," said Rural Minnesota CEP Workforce Development Board Member and Lakes Country Service Cooperative's Director of Career and College Readiness, "I am proud to serve on their workforce development board and continue to seek viable solutions to some of our fundamental workforce problems through the leveraging of knowledge and partnerships."

As part of a funding and legislative requirement, RMCEP cannot utilize its budget for advertising, so partnering with its community and local human services programs is critical to meeting their goals.

Child care and transportation continue to be significant obstacles for people seeking employment and remain legislative issues that RMCEP continues seeking solutions to. Like so many employers, RMCEP needs staff too! So, when asked what the future looks like for employers and RMCEP's role, Leaderbrand stated, "We must be proactive at projecting what's down the road. We must take the time to advocate for the necessary funds from our legislators and keep employees engaged in the workforce while taking care of our employees. It boils down to what is important for our clients."

If you want to learn more about the vital work of Rural Minnesota CEP and how they improve the lives of Minnesotans, visit their website at www.rmcep.com for more information. ■



TICKET TO WORK



For over 20 years, the Ticket to Work program has helped individuals with disabilities find meaningful jobs. On December 16, 1999, then-president Bill Clinton signed the Ticket to Work and Work Incentives Improvement Act, giving social security disability beneficiaries ages 18-64 free employment services through an Employment Network (EN) or their state Vocational Rehabilitation (VR) agency.

Rural Minnesota CEP (RMCEP) is an affiliate EN under the American Dream Employment Network, serving 19 counties in Minnesota, and is committed to offering the free Ticket to Work program to both SSI and SSDI beneficiaries. As such, the RMCEP has five certified Work Incentive Practitioners on staff who help individuals in all areas of gaining and retaining employment.

Char Hirte, RMCEP's Ticket to Work Coordinator, says, "Many people who receive social security disability benefits want to work, but they also have many questions about how employment might impact their benefits. We answer their questions and walk them through the entire process."

"The ultimate goal of the Ticket to Work program is to decrease the dependence people have on their disability benefits, but we know that is not a reasonable goal for everyone," says Hirte. "We meet people where they are and provide them with the guidance they need to make the best decision for themselves and their situation."

That means everything from help with their resumes and interviewing skills to filling out the required paperwork for some. For others, it means education on how the Ticket to Work program can help them if and when they are ready to work.

"Individuals who receive disability benefits have their benefits reviewed every three or seven years, called a Continuing Disability Review, to determine if they continue to have a disabling condition," says Hirte. "If people assign their Ticket to RMCEP and make timely progress through the Ticket to Work program, they don't have to go through that medical review process. It's important people know that."

She says it's also important that people understand that just because they have a job does not mean they will automatically lose their Medicare or Medicaid. "Most people who work will continue to receive at least 93 months of Medicare. In addition, Medicaid coverage can continue even if their earnings become too high for an SSI (Social Security Income) cash payment if they meet the requirements." Those who RMCEP works with, however, receive plenty of support from the agency. The Social Security Administration (SSA) requires that the Work Incentive Practitioners keep in touch with their clients at least monthly and provide ongoing employment and work incentive advisement. RMCEP can also assist with wage reporting to SSA.

"We understand that individuals on disability benefits want and need help to safely explore their work options without losing their benefits. We help them navigate their options, answer their questions and become a trusted resource for them," says Hirte. ■

There is never any cost for the services offered by RMCEP, including the Ticket to Work program. For more information, please contact: Char Hirte, Ticket to Work Coordinator Rural Minnesota CEP, Inc. Cell (218)850-1453

ARSENIC
WHAT LEVEL
is safe?



HORIZON PUBLIC HEALTH

FREE ARSENIC TESTING

OFFERED FOR RESIDENTS OF GRANT,
STEVENS, AND TRAVERSE COUNTIES



WHAT IS ARSENIC?

Arsenic occurs naturally in rocks and soil across Minnesota and can dissolve into groundwater. Drinking water that contains arsenic can increase your risk of cancer and other serious health effects. Unfortunately, there is no way to know the arsenic level in water before a well is drilled. Arsenic levels can vary between wells, even within a small area. You cannot taste, see, or smell arsenic in your water.

Why is it harmful? Consuming water with even low levels of arsenic over a long time is associated with diabetes and increased risk of cancers of the bladder, lungs, liver, and other organs. Ingesting arsenic can also contribute to cardiovascular and respiratory disease, reduced intelligence in children, and skin problems such as lesions, discoloration, and the development of corns. Health impacts from arsenic exposure may take many years to develop.

What level of Arsenic is safe in drinking water? The maximum level of arsenic the U.S. Environmental Protection Agency (EPA) allows in community water systems is ten micrograms per liter ($\mu\text{g/L}^*$). However, consuming water with arsenic at levels lower than the EPA standard over many years can still increase your risk of cancer. As a result, the EPA has set a goal of 0 $\mu\text{g/L}$ of arsenic in drinking water.

Source/Author: Horizon Public Health

WHAT CAN I DO?

1. Obtain a testing kit. Contact Horizon Public Health or your local Soil and Water Conservation District office in Grant, Stevens, or Traverse County to obtain a FREE arsenic testing kit from an accredited laboratory to test your water while supplies last.

2. Test your drinking water. Follow the instructions for your test kit to obtain a water sample and return your sample to an accredited laboratory.

3. Reduce arsenic levels. If arsenic is detected, consider installing a treatment system or using a different drinking water source.

What treatment option for arsenic is the most cost-effective?

Once your arsenic results have been processed by the laboratory and the arsenic levels in your water are 10.0 micrograms/liter or higher, Horizon Public Health will contact you to determine if you qualify for a reduced water treatment system. The most cost-effective water treatment system to reduce arsenic levels is a reverse osmosis (R/O) system. R/O uses energy to push water through a membrane with tiny pores. The membrane stops many contaminants while allowing water to pass through.

For a complete listing of other water treatment options for high levels of arsenic, visit the Minnesota Department of Health website www.health.state.mn.us and search “arsenic in well water.” ■

This project is delivered through a partnership between Horizon Public Health and Soil and Water Conservation Districts in Grant, Stevens, and Traverse Counties.



SARAH MOORE ★

CELEBRATES 20 YEARS WITH LSNM

Congratulations are in order for Sarah Moore, Supervising Attorney in the LSNM Alexandria office - she is celebrating 20 years with Legal Services of Northwest Minnesota!

Sarah graduated from Marquette University in 1998 with a B.A. in Criminology and Law Studies. She went on to graduate from Hamline University School of Law in 2001 and began employment with LSNM in the Moorhead office in March of 2002.

Sarah enjoys making a difference in the lives of people who may not have many other options to solve genuine problems. In the last 20 years, there were many times she knew the assistance she gave a client made a very positive impact on their life.

Sarah is a member of the Douglas County Bar Association. Her life outside work revolves around her 16- and 13-year-old boys and all their activities, but she wouldn't have it any other way. She loves to run, exercise, be outdoors, spend time at the lake, and be just about anywhere with extended family. Congratulations, Sarah, and thank you for all you do for LSNM.



HEATHER LABAT ★

HEATHER LABAT JOINS THE LSNM BEMIDJI OFFICE.

Heather's motivation comes from her passion for helping people, which is a trait she picked up as a kid growing up on a small farm in southwest Minnesota. Heather says, "my dad was always willing to lend a helping hand to anyone who asked or who was in need. My dad cared about helping his neighbors and community, and he never asked for anything in return. Because I was fortunate enough to realize my career goals and aspirations, I feel it's essential to help others, and the best way I can give back to my neighbors and my community is to help others with their legal situations. No one should have to go into court without an advocate to help them navigate the legal system. Being part of the LSNM Justice Team allows me to help my neighbors and community."

Heather is originally from southwest Minnesota and after college received her paralegal certificate and then worked for the U.S. District Court in Minneapolis for about 8 years. She started law school in 2010 at William Mitchell (now Mitchell Hamline School of Law), where she graduated in May 2013.

Heather lives near Bemidji and outside of work enjoys spending time with her husband, family, and friends.

SMART ROOMS

Visit

ottertailcountymn.us/broadband
for more on the technology available.

Otter Tail County used Blandin Foundation grant funds to install and upgrade 10 smart rooms throughout the County. Smart rooms are FREE-to-use public spaces with public wi-fi and video conference technology. These spaces are great for remote workers, job interviews, online learning, virtual meetings, and more.

Source/Author: Otter Tail County

Stay Connected at SMART ROOMS

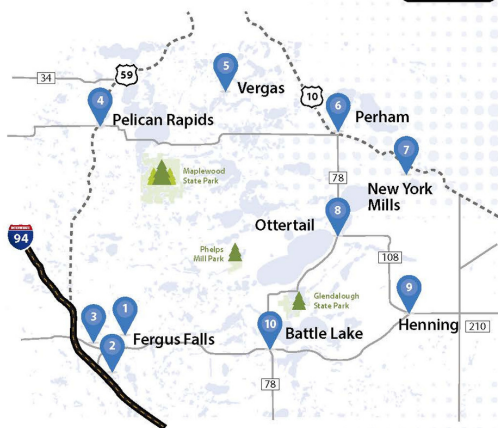
Smart rooms are FREE-to-use public spaces throughout Otter Tail County with public wi-fi and video-conference technology. These spaces are great for remote workers, job interviews, online learning, and virtual meetings.

Visit ottertailcountymn.us/broadband or scan the QR code for more on the technology available.

Please make a reservation in advance at these sites and respect the property by following all rules outlined in each location's policy.



SCAN ME



- 1 Fergus Falls Public Library
205 East Hampden Avenue
Fergus Falls, MN 56537
(218) 739-9387
- 2 Fergus Falls Chamber of Commerce
202 S Court Street
Fergus Falls, MN 56537
(218) 736-6951
- 3 Otter Tail County Historical Society
1110 W Lincoln Avenue
Fergus Falls, MN 56537
(218) 736-6038
- 4 Pelican Rapids Public Library
25 W Mill Avenue
Pelican Rapids, MN 56572
(218) 863-7055
- 5 Vergas Event Center
140 W Linden Street
Vergas, MN 56587
(218) 342-2091
- 6 Perham Public Library
225 2nd Avenue NE
Perham, MN 56573
(218) 346-4892
- 7 New York Mills Public Library
30 Main Avenue N
New York Mills, MN 56537
(218) 385-2436
- 8 City of Ottertail
239 MN HWY 78
Ottertail, MN 56571
(218) 367-2250
- 9 Henning Landmark Center
415 Douglas Avenue
Henning, MN 56551
(218) 548-5760
- 10 City of Battle Lake
108 Main Street
Battle Lake, MN 56515
(218) 864-0424



CPC Awards New Vendor!



Staging Concepts, a Trex Company, is the industry leader in portable, demountable solutions specifically designed for spectators, fans, guests, and audiences to safely access and enjoy amazing live event experiences. Portable stages, field modifications, ramps, barricades, media risers, acoustical shells and an array of other solutions are strategically designed for convenient setup and can be permanently or temporarily installed. Since 1990, we've provided superior solutions for live event facilities including theaters, educational facilities, sports stadiums, hotels, worship facilities, and more. To maximize the use of your venue, we can also help determine how to reconfigure your space to increase the types of events you can host - providing you a multi-purposeful and thriving entertainment space.

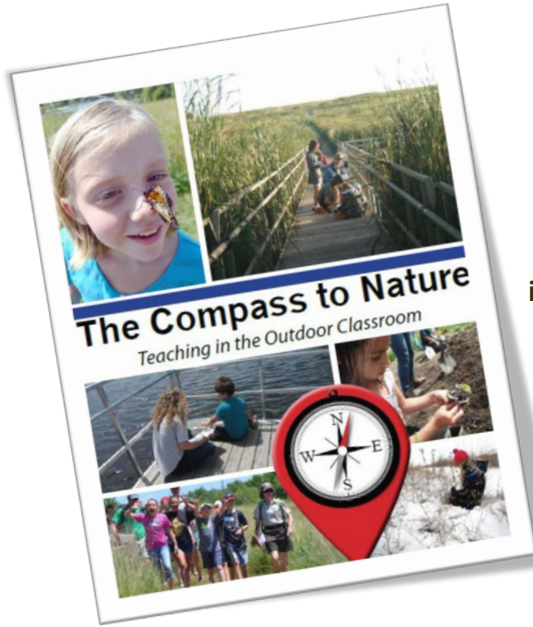
Purchases through the CPC Contract receive discounted pricing and a dedicated sales representative. Reference Contract # AEPA 022-F when contacting Tracy Meister.

Tracy Meister
763-999-4417
tmeister@stagingconcepts.com

Visit www.purchasingconnection.org for more information

Educator

Workshop



All Who Teach Children are Invited to ...
... Explore innovative ways to use an outdoor classroom during this free, PreK-12th grade introductory workshop. ... Gain knowledge and real-world experience in the prairie pothole ecosystem with direct carry-over to any geographic location, any age, and any season.
... Use this simple, practical, and proven approach.




Prairie Wetlands Learning Center

Source/Author: Prairie Wetlands Learning Center

Monday,
June 20, 2022

8:00 am – 4:30 pm

Receive 7 Clock
Hours for
Continuing
Education Credits

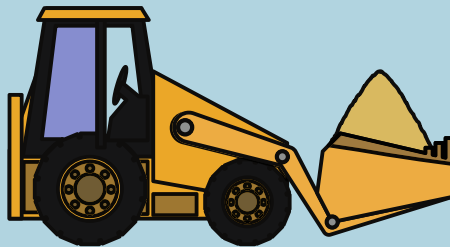
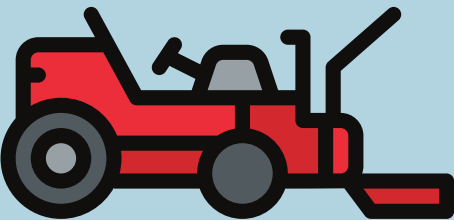
Practice Using
Science Field Equipment

Use the C2N at
Your School Site

PRAIRIE WETLANDS LEARNING
CENTER
602 State Highway 210,
Fergus Falls MN

To Register
Contact Mona Davis at
218-998-4493

Cost: \$25.00



**Interested in selling a law enforcement vehicle, trailer,
skid steer, snow blower or more?**

For over 39 years, Mid-State Auto Auction, located in New York Mills, MN, has held a weekly auction, providing a live and online experience to a huge network of buyers. Due to a shortage of vehicles in the market and high demand, we are achieving above average market values for CPC members. We set CPC members' vehicles up for success by having them run at the very top of our busiest lane when the bidding is most aggressive, ensuring a maximum result.

Dee Sullivan

218-298-0717

dee@msaany.com

CPC valued customers receive a discount when selling vehicles with us.
Reference Contract #F15-MSA when contacting Dee.

Visit www.purchasingconnection.org for more information

April

Awareness

The weather may still be cold, but spring is here!
It's time to kick it off with fun activities, friendly competition,
and a chance to win some gift cards!

April Awareness is a chance for our insurance members to
prioritize their health and have fun doing it.

This year the activities come in the form of a virtual board game.
You can roll the die, move the game piece further along the
board, and complete the activities you land on. Do you have
what it takes to complete the game?

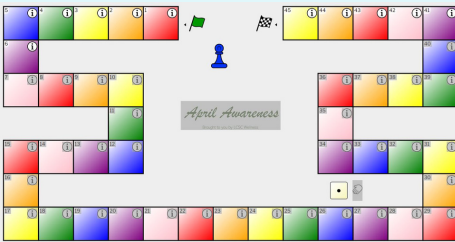
[Click here for instructions](#) on how to participate or email

Reese Ellison at rellison@lcsc.org!

**APRIL AWARENESS IS OFFERED
TO OUR INSURANCE POOL MEMBERS ONLY.**

Source: Reese Ellison, Insurance and Wellness Specialist, Lakes Country Service Cooperative.

LCSC WELLNESS



CONTACT US

Phone: (218) 739-3273
(800)739-3273 (toll free)

Fax: (218) 739-2459

Email: communicator@lcsc.org

Executive Director: Jeremy Kovash



COMMUNICATOR STAFF

Editors: Jane Eastes: jeastes@lcsc.org

Mary Phillipe: mphillipe@lcsc.org

Address:

Lakes Country Service Cooperative
1001 E. Mount Faith
Fergus Falls, MN 56537

An equal opportunity employer



*The LCSC Communicator is a publication of
Lakes Country Service Cooperative.*

*Views and ideas expressed in the LCSC
Communicator by its contributors or
advertisers do not necessarily reflect views or
policies of Lakes Country Service Cooperative
and should not be considered an endorsement
thereof.*

*Lakes Country Service Cooperative retains the
right to accept, reject or edit any submitted
material and requires all submissions to be
signed and dated.*